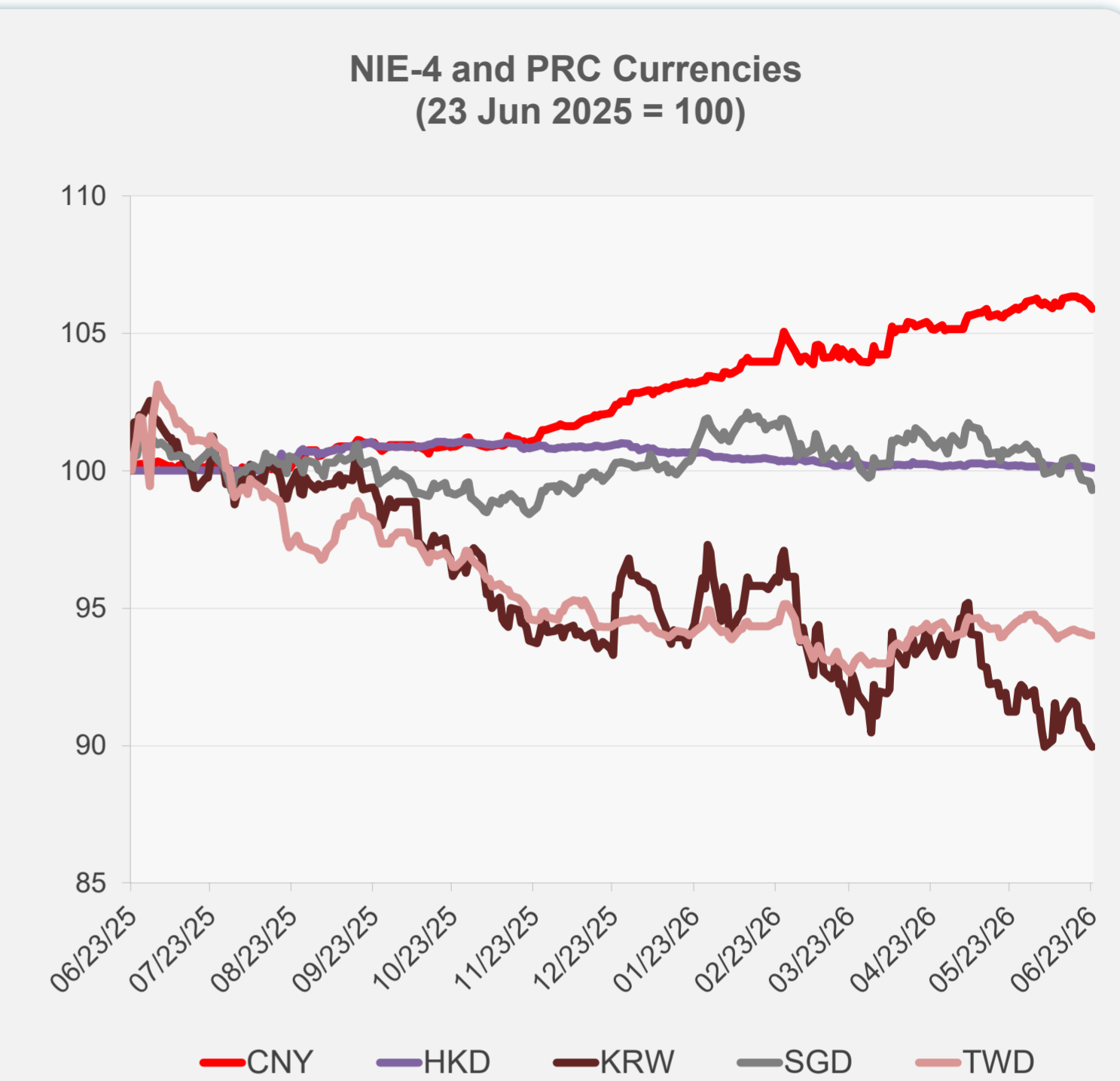
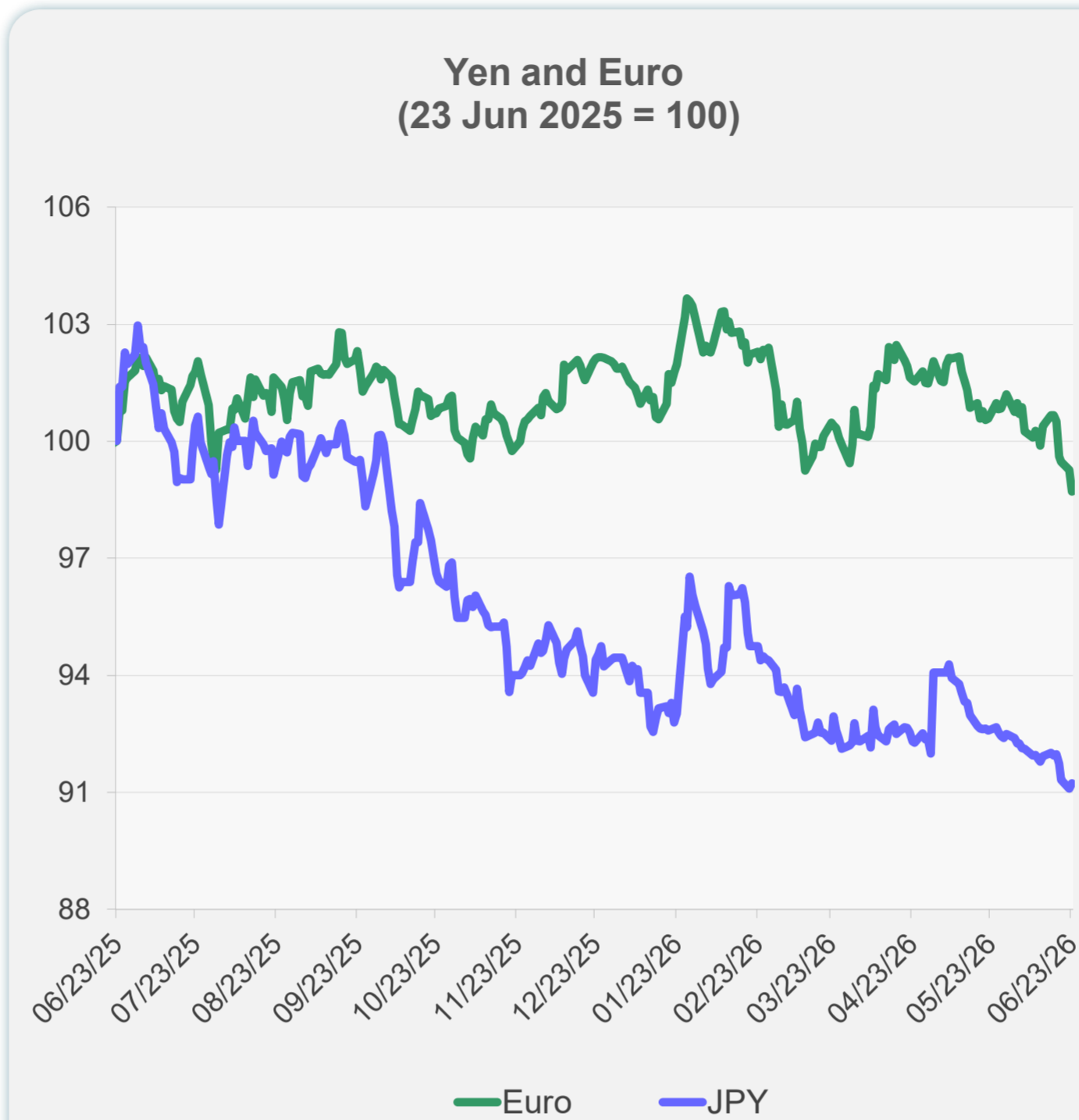
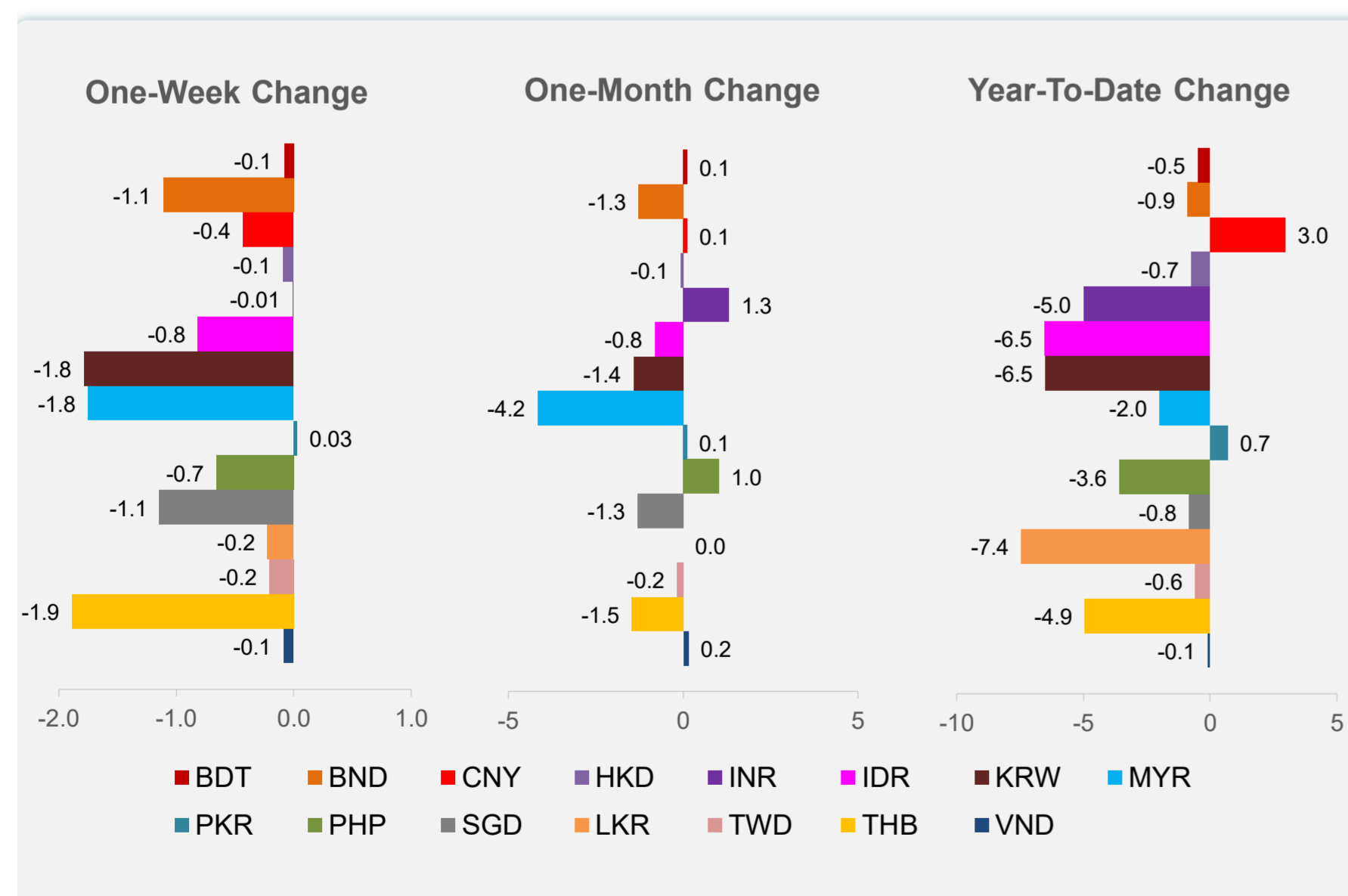
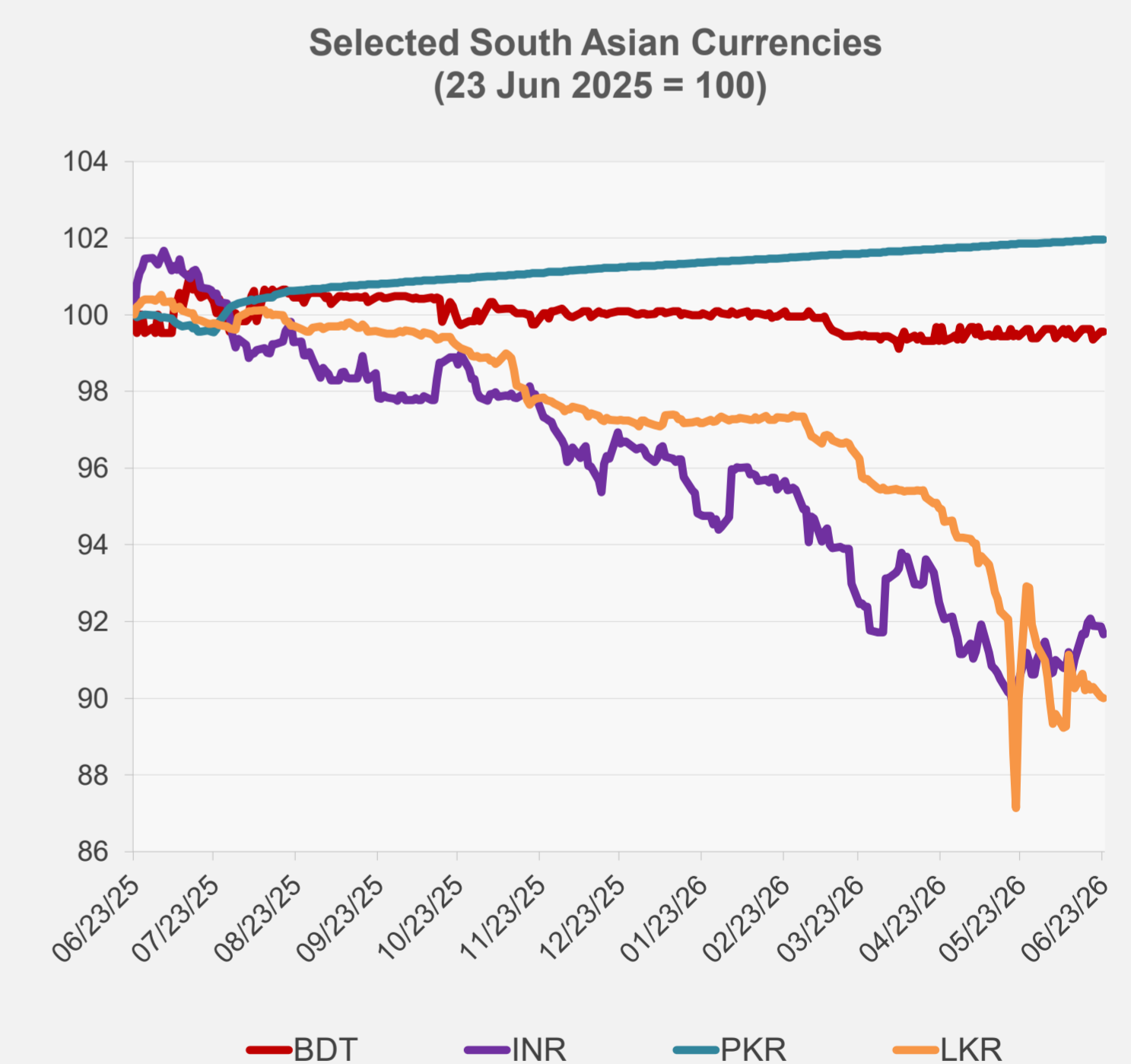
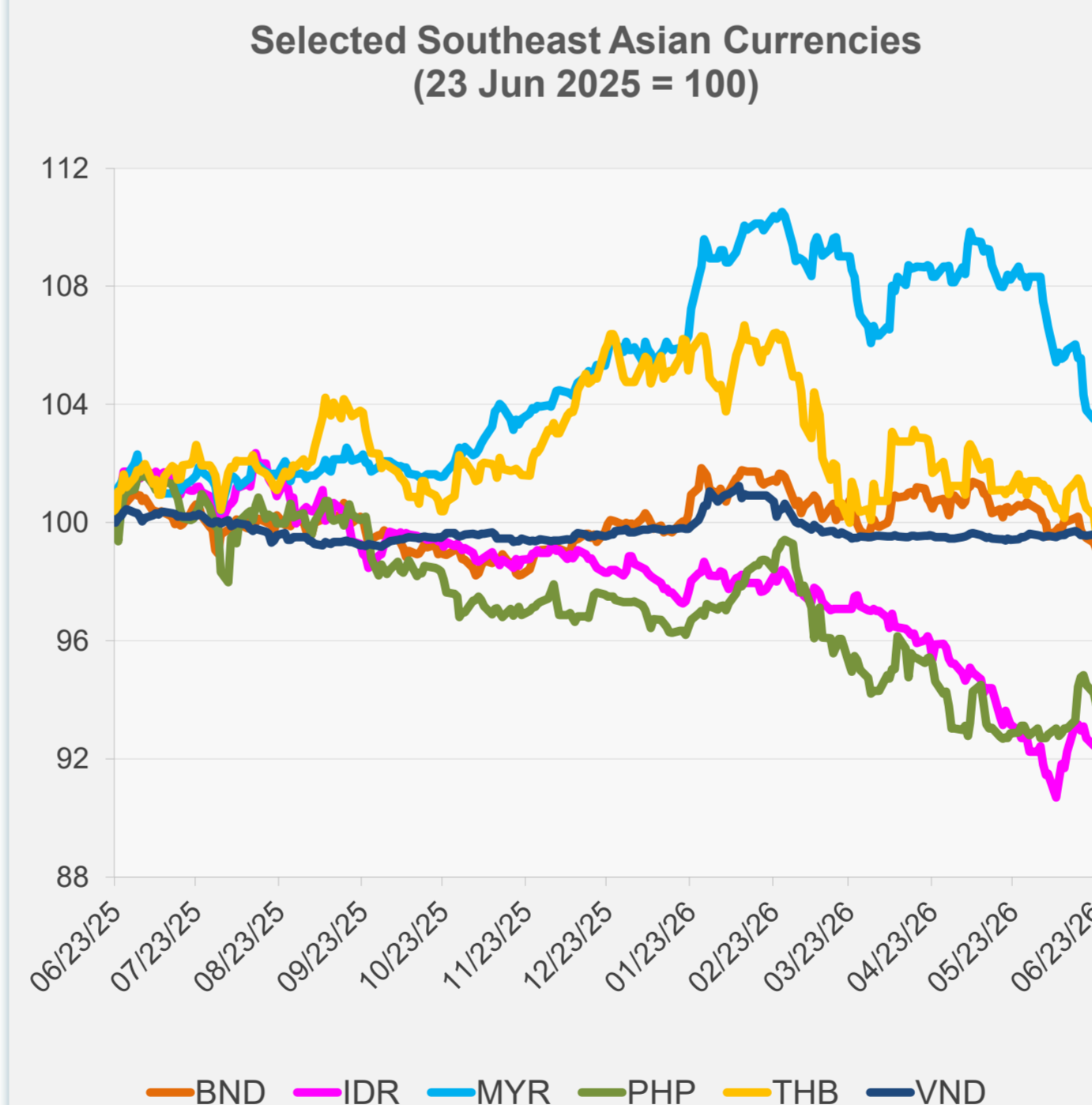


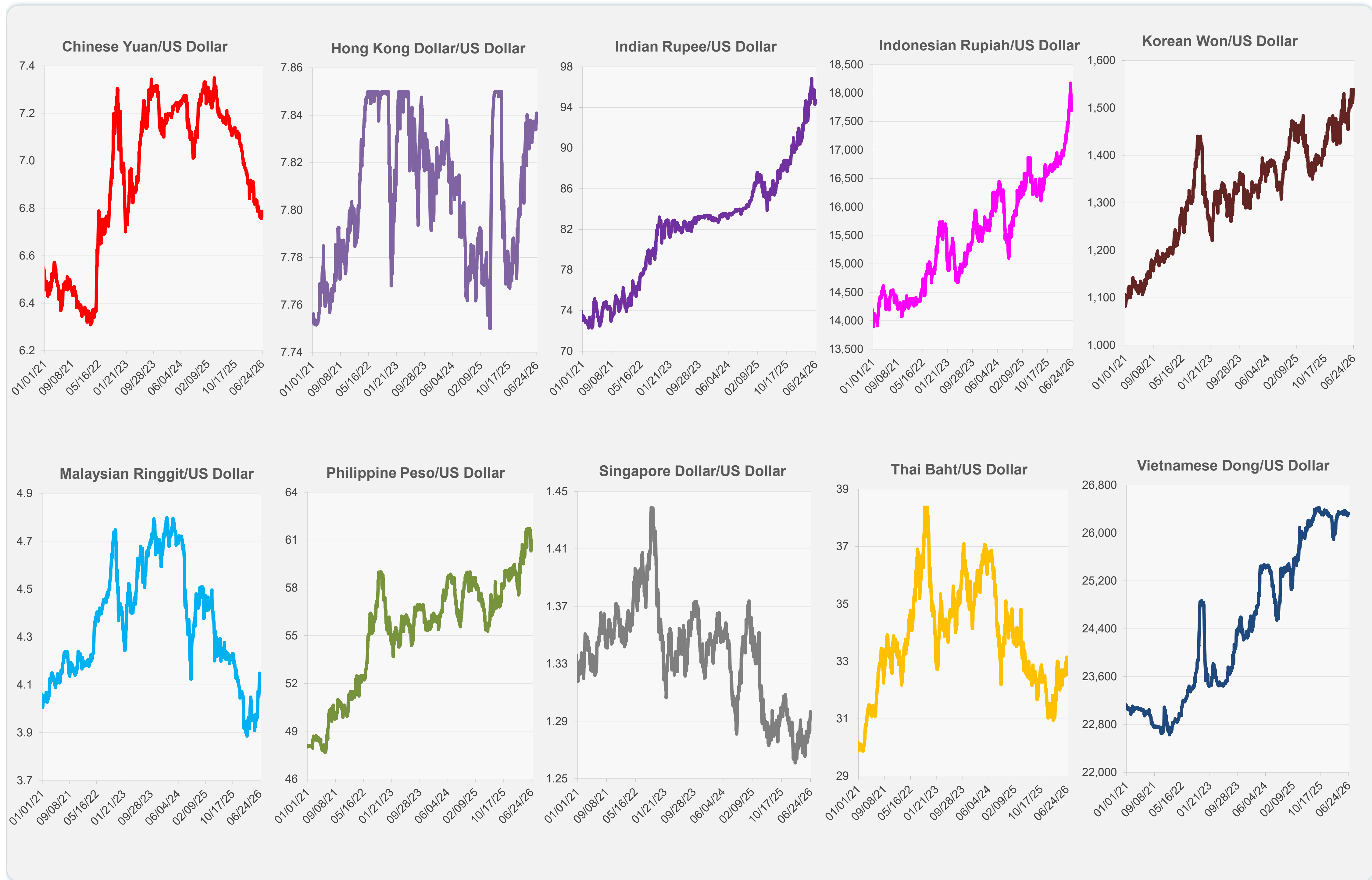
	Latest Closing	% change from Previous Day	% change from 01-Jan-26
Euro	0.88	-0.55	-3.08
Japanese yen (JPY)	161.48	0.16	-3.41
Bangladeshi taka (BDT)	122.85	0.00	-0.49
Brunei dollar (BND)	1.30	-0.25	-0.89
Chinese yuan (CNY)	6.79	-0.15	2.97
Hong Kong dollar (HKD)	7.84	-0.01	-0.73
Indian rupee (INR)	94.71	-0.22	-4.99
Indonesian rupiah (IDR)	17,840.00	-0.06	-6.53
Korean won (KRW)	1,539.10	-0.14	-6.50
Malaysian ringgit (MYR)	4.14	0.21	-1.99
Pakistan rupee (PKR)	278.19	0.01	0.69
Philippine peso (PHP)	60.99	-0.44	-3.58
Singapore dollar (SGD)	1.30	-0.30	-0.83
Sri Lanka rupee (LKR)	334.50	-0.04	-7.44
Taipei,China NT dollar (TWD)	31.63	0.02	-0.59
Thai baht (THB)	33.14	-0.68	-4.94
Vietnamese dong (VND)	26,324.00	-0.02	-0.09



NIE = Newly Industrialized Economies



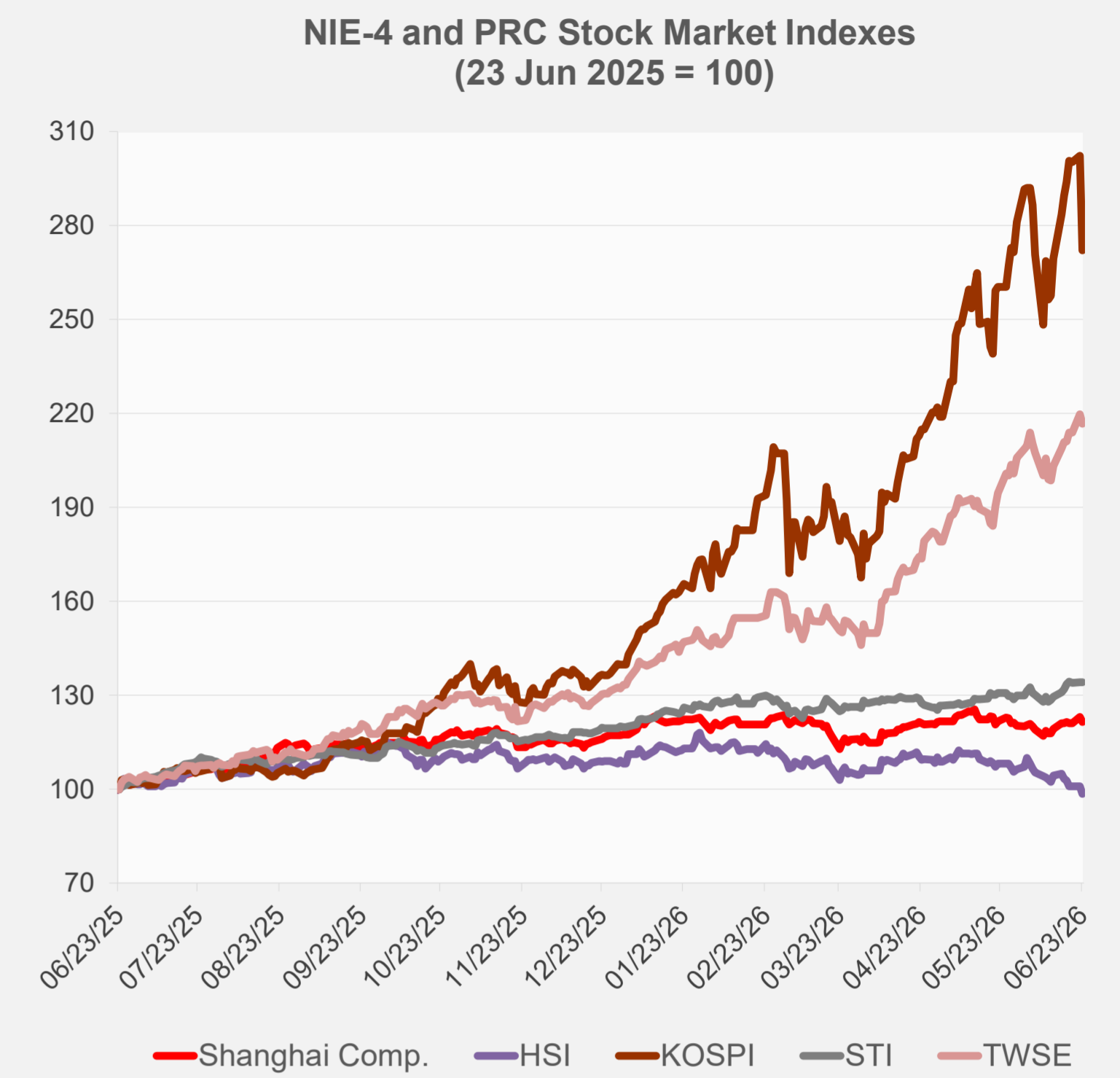
Note: Negative/Decreasing values indicate depreciation of local currency, and positive/increasing values indicate appreciation.
Source: ADB calculations using data from Bloomberg and Haver Analytics.



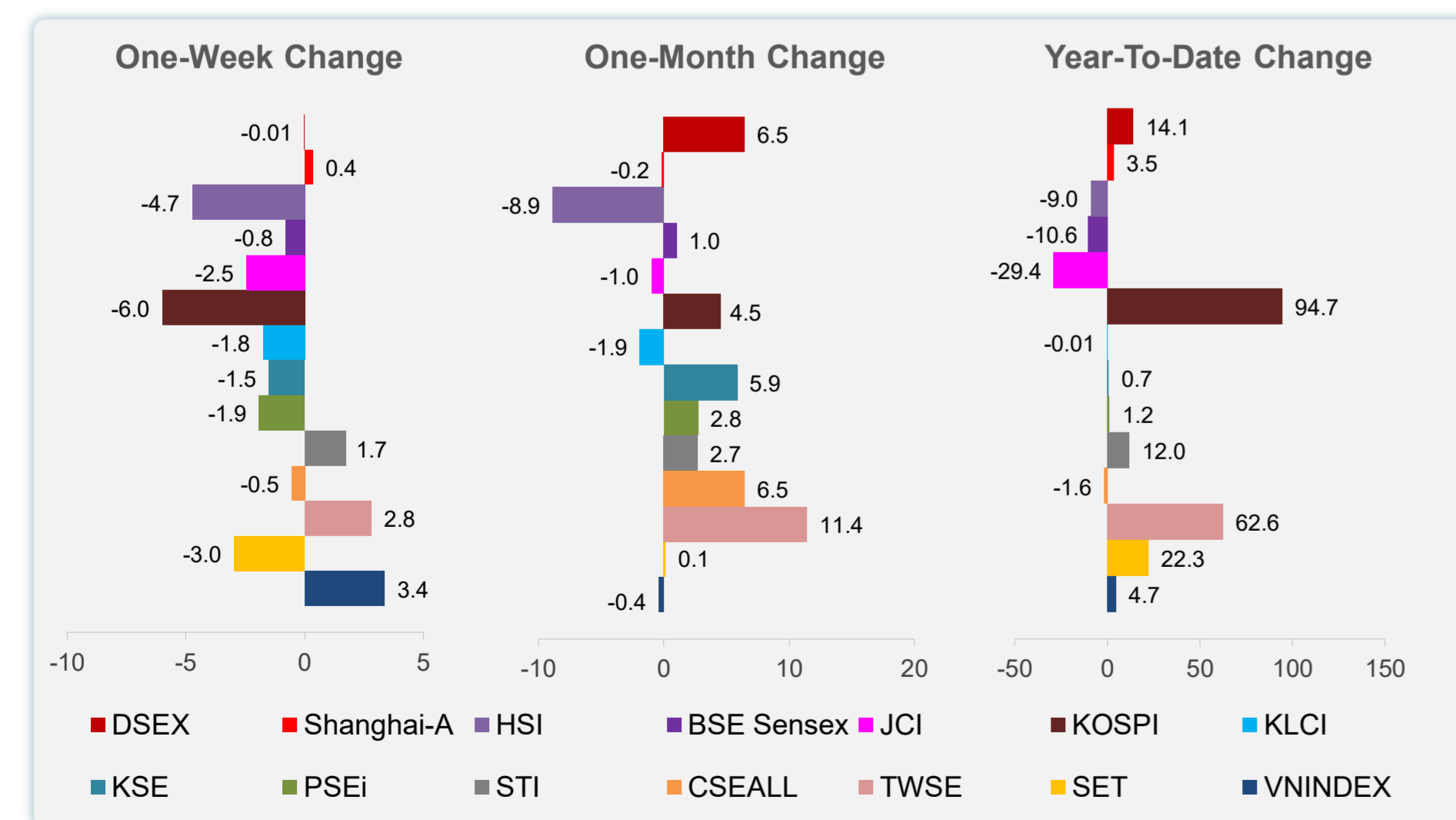
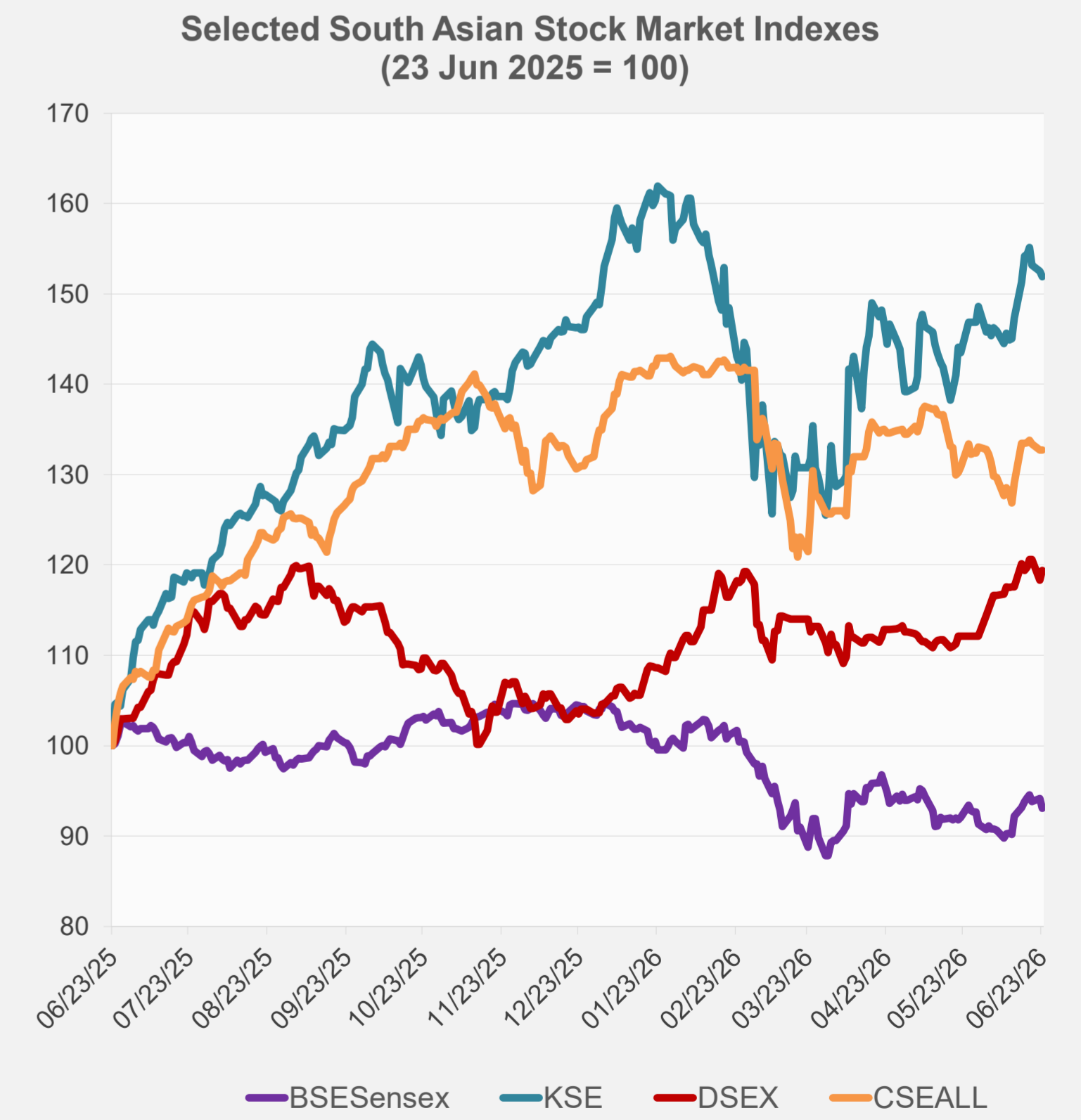
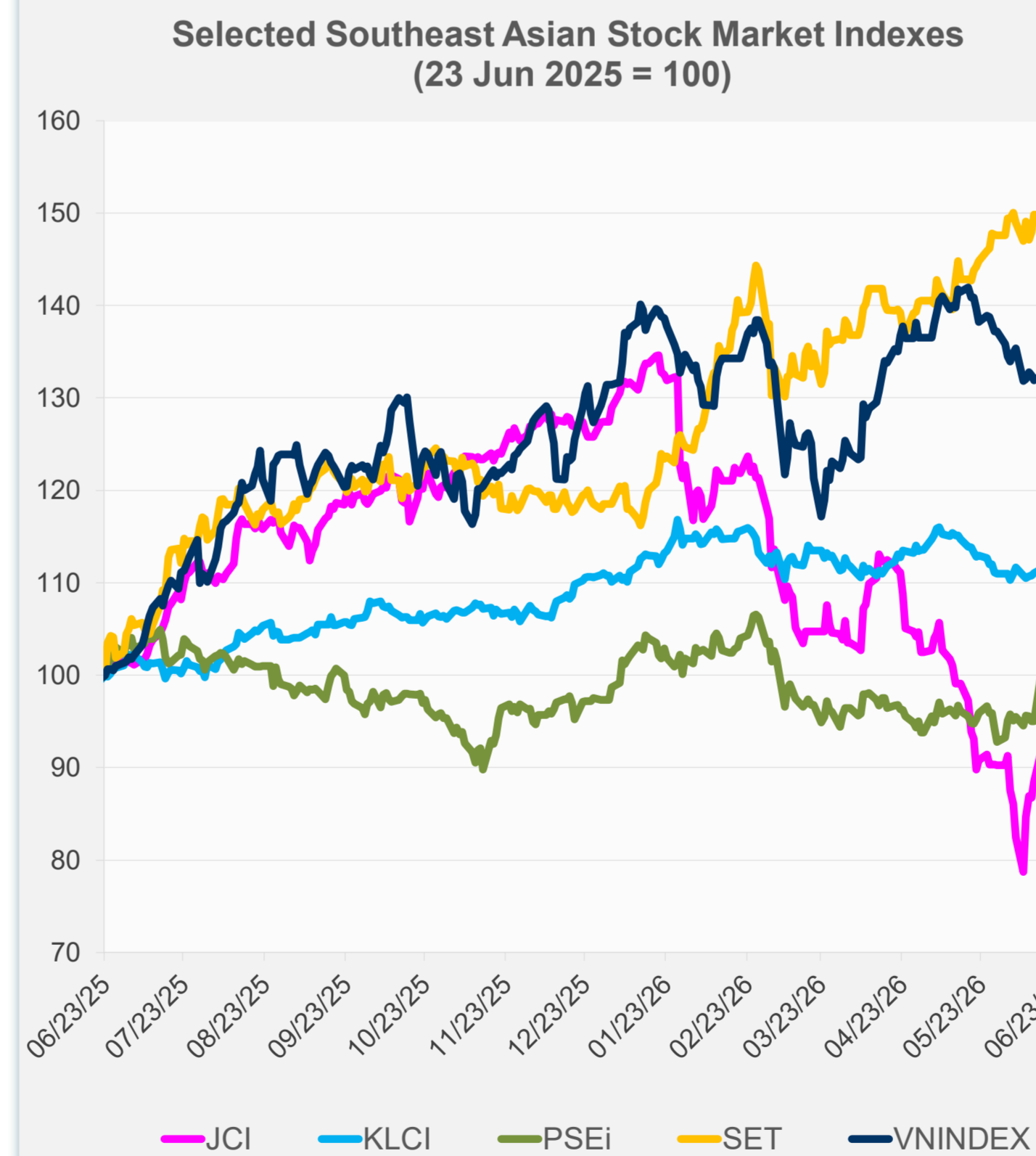
Source: Haver Analytics.

Daily Market Watch
STOCK INDEXES

	Latest Closing	% change from Previous Day	% change from 01-Jan-26
US Dow Jones Ind Avg	51,666.84	-0.09	7.50
US NASDAQ	25,587.04	-2.21	10.09
US S&P 500	7,365.46	-1.44	7.60
UK FTSE 100	14,539.61	-1.29	29.11
EURO STOXX 50	6,230.55	-1.28	7.58
Japan NIKKEI 225	69,788.38	-3.55	38.64
Bangladesh DSEX	5,605.25	0.92	14.15
PRC Shanghai Comp.	4,106.25	-1.37	3.46
Hong Kong, China HSI	23,336.28	-2.46	-8.95
India BSE Sensex	76,200.68	-1.16	-10.55
Indonesia JCI	6,101.33	-0.25	-29.44
Korea, Rep. of KOSPI	8,203.84	-9.99	94.67
Malaysia KLCI	1,679.92	-1.23	-0.01
Pakistan KSE 100	177,774.30	-0.39	0.74
Philippines PSEi	6,126.22	1.51	1.21
Singapore STI	5,205.74	0.03	12.04
Sri Lanka CSEALL	22,256.49	0.01	-1.63
Taipei, China TWSE	47,100.65	-1.34	62.62
Thailand SET	1,540.90	-2.11	22.33
Viet Nam VNINDEX	1,869.04	0.60	4.74



NIE = Newly Industrialized Economies



Sources: ADB calculations using data from Bloomberg and CEIC Data Company.



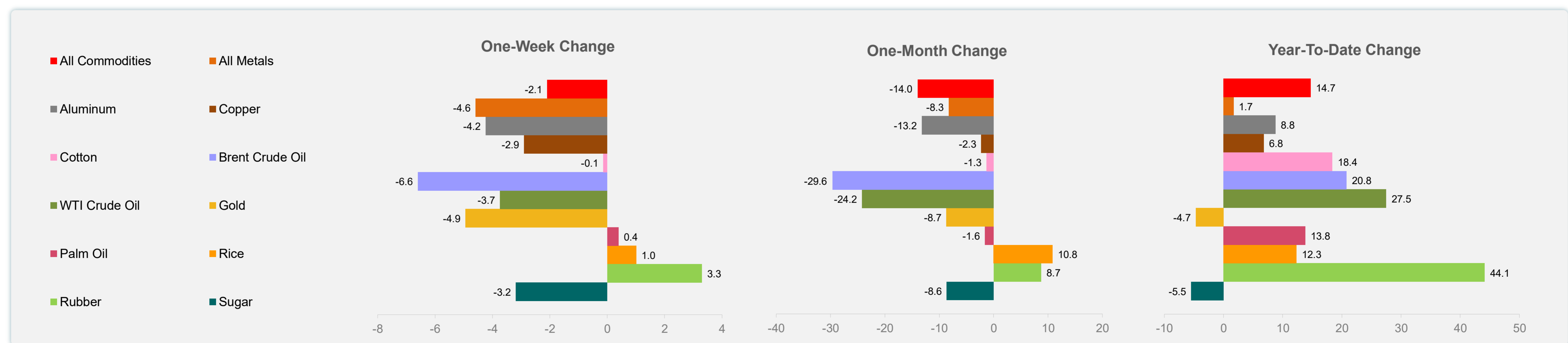
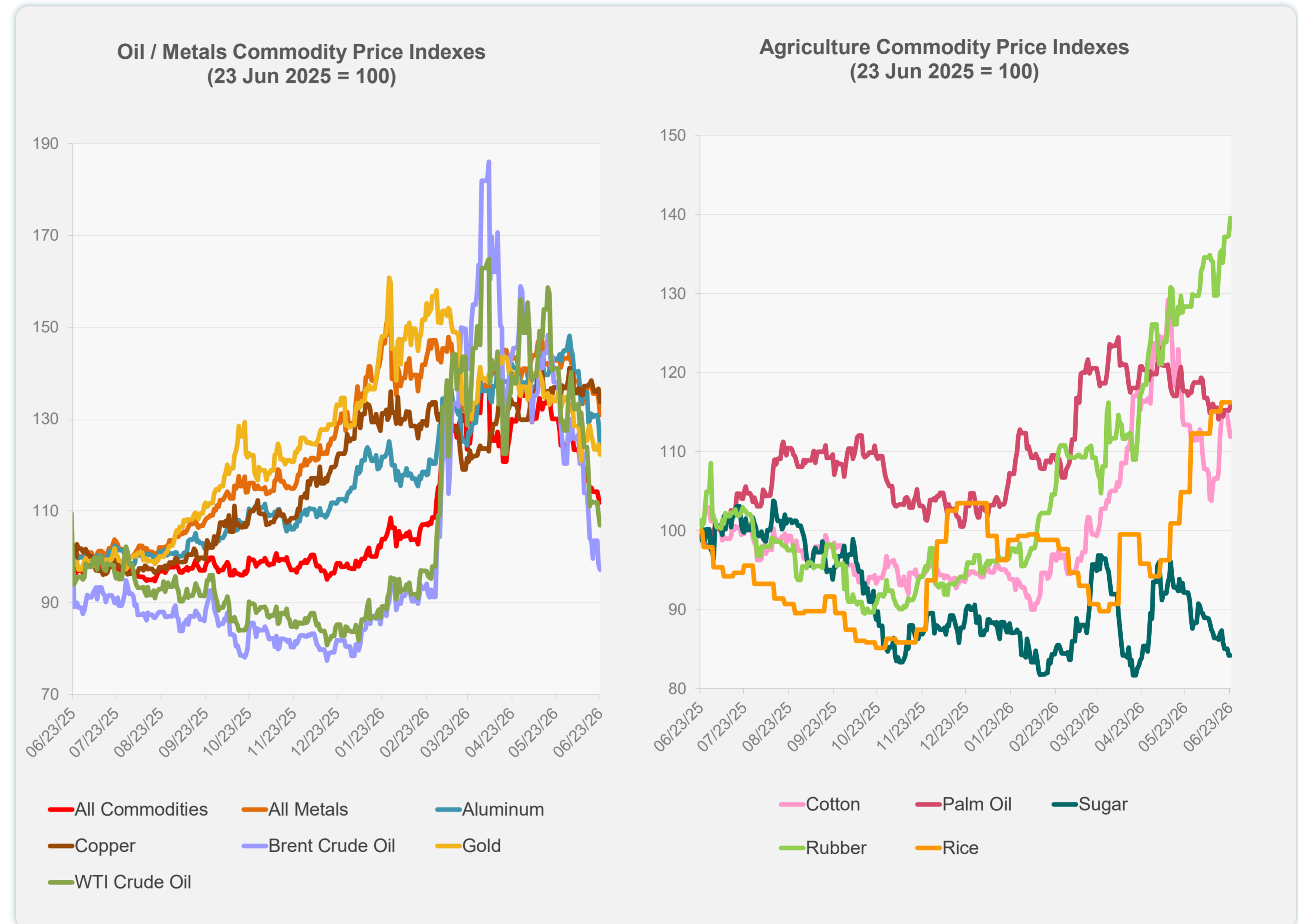
Sources: ADB calculations using data from Bloomberg and CEIC Data Company.

Daily Market Watch
COMMODITY PRICES

24 June 2026, 9:00 AM Manila

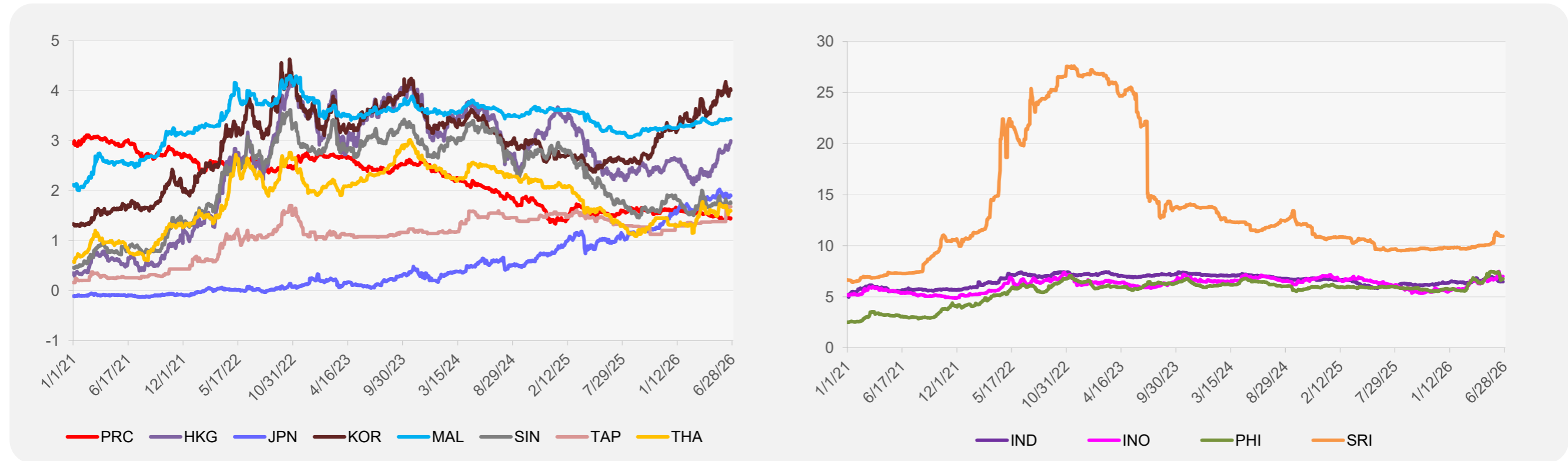
	Unit	Latest Closing	% change from Previous Day	% change from 01-Jan-26
S&P All Commodities	US\$	629.19	-0.95	14.71
S&P All Metals	US\$	451.28	-2.64	1.70
Aluminum	US\$/metric ton	3,229.04	-3.91	8.80
Copper	US\$/metric ton	13,302.84	-2.04	6.82
Cotton	US cents/lb	73.43	-1.16	18.40
Brent Crude Oil	US\$/barrel	75.43	-1.17	20.79
WTI Crude Oil	US\$/barrel	73.21	-2.15	27.50
Gold	US\$/troy oz	4,117.19	-1.74	-4.68
Palm Oil	US\$/metric tonne	1,102.50	0.47	13.82
Rice ¹	US\$/metric ton	501.00	0.00	12.33
Rubber ²	US\$/kg	309.90	1.61	44.14
Sugar	US cents/lb	13.98	0.00	-5.48

¹ Latest closing price from 17 June 2026.
² Singapore Exchange, Ribbed Smoked Sheet Rubber.

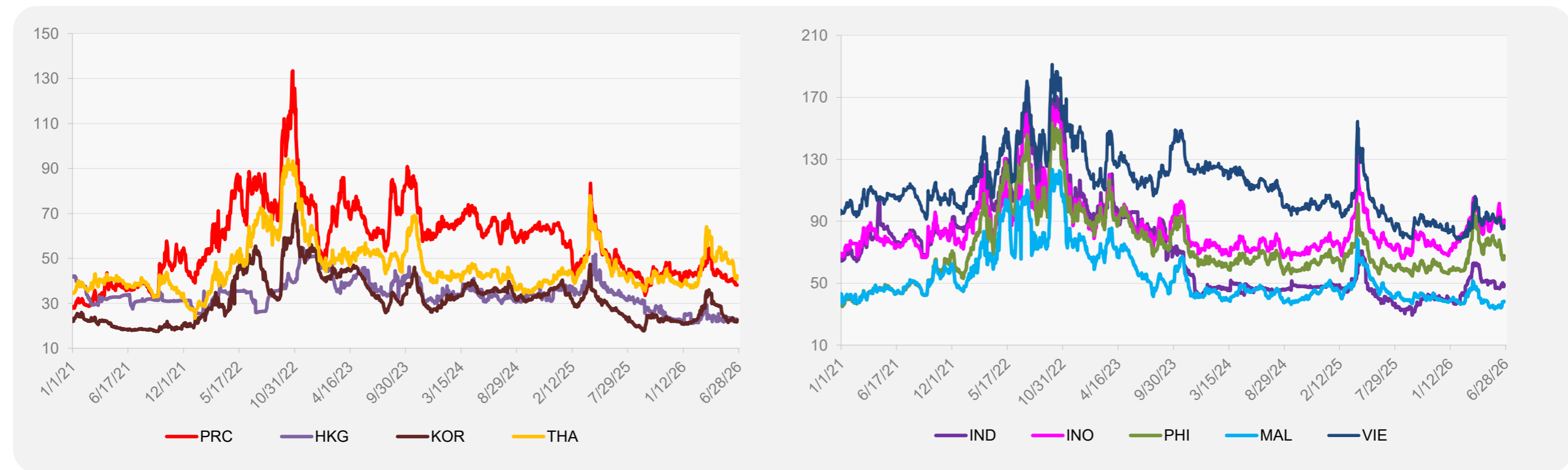


Source: ADB calculations using data from Bloomberg.

5-YEAR LOCAL CURRENCY GOVERNMENT BOND YIELDS (%)



5-YEAR CREDIT DEFAULT SWAP¹



¹ In USD and based on sovereign bonds.
Source: ADB calculations using data from Bloomberg.